

Redline

RI
Implements

Tel: 0800 872 2767

www.jinma.co.za/implements.html

Model: RP-5



Model: RP-350
RP-500



Ripper, Pype
Layer



Transport
Box

Important:

Read these instructions before installing and using this implement.

CONTENTS

CONTENTS	1
PRODUCT SPECIFICATIONS	2
SAFETY INSTRUCTIONS	3
OPERATION	8
MAINTENANCE	9
PARTS LIST. SINGLE TYNE RIPPER & PIPELAYER	10
PARTS LIST. TRANSPORT BOX	11

PRODUCT SPECIFICATIONS

Product No.

RP-500 Small Standard Single Tyne Non-Adjustable Ripper Digging Depth 560mm

RP-350 Small Deluxe Single Tyne Adjustable Ripper Digging Depth 390-690mm

RP-500 Standard Five Adjustable Ripper Digging Depth 270-350mm

RIPPERS

These are four different single tyne rippers and two multi tyne rippers. The standard single tyne non-adjustable ripper, the deluxe single tyne adjustable ripper and the standard three and five tyne rippers.

Uses:

All rippers are useful on standard tractors, but can also suit other agricultural machines like dozers - single tyne ripper can be fitted with the pipe layer attachment to make laying poly pipe of up to 50mm diameter an easy one person process - perfect for preparing soil crops or lawn.

Features:

The single tyne ripper has a reversible cutting tooth that is easily replace - deluxe single tyne rippers have adjustable shank for easy depth control - the three tyne ripper is extremely strong and has height adjustable tynes - centre tyne can also be quickly removed for creating a wider ripped area - the five tyne ripper is perfect for a closer rip distance and tynes are all adjustable & removable for creating wider rip areas - cutting teeth are replaceable - extra strong, re-enforced steel framing for longer life.

Carryalls

There are seven carryall types, they are 3'x2', 4'x3', 6'x3' and 7'x3' Steel floor and 4'x3', 5'x3' wooden floor.

Uses:

Perfect for transporting water & diesel tanks, chain saw, toolboxes, stock feed, small tanks, hay, hoses, generators and even your best mate.

Features:

Strong steel frame & base - 5 size options - easy to attach - easy to store - wood or steel floor model available.

Transport Box

There are two types of transport boxes, they are 3'x4', 3'x5', quick release tipping lever, swinging \$ removable tail gate

Uses:

Perfect when collecting firewood and cleaning debris around your property - ideal for moving tools, fuel tanks, sprayers, generators and dirt around even the roughest terrain - with the tail gate removed it can also be backed into soil, sand or grain, turning the redline transport box into a mini loader as well.

PRODUCT SPECIFICATIONS

Features:

High walls for transporting taller items ~ re-enforced rear base for reversing into loose materials for easy loading ~ quick release tipping lever ~ swinging & removable tail gate ~ easy store ~ robust design ~ high strength rear base for reversing into loose soil mounds.

Implement Specifications

RIPPER	RP-500	RP-350	RP-5
Tractor HP	15-25hp	15-25hp	30-45hp
3-point linkage	Cat-1	Cat-1	Cat-1
Length	430mm	430mm	360mm
Width	640mm	640mm	1500mm
Height	1100mm	1100mm	1050mm
Weight	42kg	42kg	100kg
Tynes	Single	Single	Five
Removable Tynes	No	No	Yes
Cutting teeth width	62mm	62mm	43mm
Ripping Depth	560MM	390-690MM	270-350MM
Pipe Layer Option	Yes-PL-100	Yes-PL-100	No

TRANSPORT BOX	RP-500	RP-350
Tractor HP	15-55hp	15-55hp
3-point linkage	Cat-1	Cat-1
Length	940mm	940mm
Width	1200mm	1500mm
Height	730mm	750mm
Weight	90kg	100kg
Tipping	Quick Release	Quick Release
Rear Gate	Removable	Removable

SAFETY INSTRUCTIONS



Before operating the Rotary Hoe read the following safety instructions. Failure to comply with these warnings may result in serious injury or death.

CONGRATULATIONS! On the purchase of your New Redline Rotary hoe. This information is to assist you in preparing, operating and maintaining your Rotary hoe. Please read and understand the information completely before operating your Rotary hoe, paying special attention to all the safety details. Keep this manual handy for a ready reference.

1.1 SAFETY FIRST

YOU are responsible for the SAFE operation and maintenance of your Rotary hoe. YOU must ensure that you and anyone else, who is going to operate, maintain or work around the Rotary Hoe is familiar with the operating and maintenance procedures and related SAFETY information contained in this manual. This manual will take you step-by-step through your working day and alert you to all good safety practices that should be adhered to while operating the Rotary hoe.

SAFETY INSTRUCTIONS

Remember, YOU are the key to safety. Good safety practices not only protect you but also the people around you. Make these practices a working part of your safety program. Be certain that EVERYONE operating this equipment is familiar with the recommended operating and maintenance procedures and follows all the safety practices.

- 1 Rotary hoe owners must give operating instructions to operators or employees before allowing them to operate the machine.
- 2 The most important safety feature on this equipment is a SAFE operator. It is the operator's responsibility to read and understand ALL Safety and Operating instructions in the manual and to follow these. All accidents can be avoided.
- 3 A person who has not read and understood all operating and safety instructions is not qualified to operate the machine. An untrained operator jeopardizes himself and bystanders to possible serious injury or death.
- 4 Do not modify the equipment in any way. Unauthorized modifications may weaken the function and/or safety and could affect the life of the equipment.
- 5 Think SAFETY! Work SAFETY!

1.2 GENERAL SAFETY

1. Read the operator's Manual and all safety signs carefully before operating, maintaining, adjusting or removing the Rotary hoe.
2. Do not allow passengers to ride on the Rotary hoe.
3. Operate only at safe distance from bystanders. Clear the area of people, especially small children, before starting.
4. Stop PTO before dismounting tractor.
5. Keep feet and hands from under rotary hoe at all times.
6. Keep all shields in space. If shield removal becomes necessary for repairs, replace the shield prior to use.
7. Do not stay between the tractor and the Rotary hoe.
8. Do not approach the Rotary hoe until all has stopped.
9. All rotary blades have the ability to discharge objects at high speeds, which could result in serious injury to bystanders or passers-by, use with extreme caution.
10. Place all controls in neutral, stop tractor engine, set park brake, remove ignition key and wait for all moving parts to stop before servicing, adjusting, repairing, attaching or removing.
11. Review safety related items annually with all personnel who will operate or maintain the Rotary hoes.
12. Do not operate machine if you feel unwell or physically unfit, in which case you should stop working.
13. This machine was designed with safety very much in mind. However, there is no real substitute for caution and attention in preventing accidents. Once an accident has happened, it is too late to think about what you should have done.
14. Use a tractor equipped with a Roll Over Protective Structure (ROPS). Always wear your seat belt. Serious injury or even death could result from falling off the tractor-particularly during a turnover when the operator could be pinned under the ROPS or the tractor.
15. Never exceed the limits of a piece of machinery. If its ability to do a job, or to do so safely, is in question – **DON'T TRY IT.**
16. Clear working area of stones, branches or hidden obstacles that might be hooked or snagged, causing injury or damage.

SAFETY INSTRUCTIONS

1.3 OPERATING SAFETY

1. Read and understand the Operator's Manual and all safety signs before operating, servicing, adjusting, repairing or removing.
2. Do not allow riders.
3. Install and secure all guards and shields before starting or operating.
4. Keep hands, feet, hair and clothing away from moving parts.
5. Place all controls in neutral, stop tractor engine, set park brake, remove ignition key and wait for all moving parts to stop before servicing, adjusting, repairing, attaching or removing.
6. Place all tractor and machine controls in neutral before starting.
7. Never start or operate machine unless sitting on tractor seat.
8. Clear the area of bystanders, especially small children, before starting.
9. Stay away from PTO shaft and machine when engaging PTO. Keep others away.
10. Using warning lights on tractor when transporting.
11. Do not put hands or feet under machine while tractor engine or machine is running.
12. Do not operate Rotary hoe in the raised position.
13. Objects can be thrown out from under machine with sufficient force to severely injure people. Stay away from machine when it is running. Keep others away.
14. Always know what you are hoeing. Never operate Rotary hoe in an area that has hidden obstacles. Remove sticks, stones, wire or other objects from working area before starting.
15. Review safety instructions with all operators annually.

1.4 STORAGE SAFETY

1. Store the machine in an area away from human activity.
2. Do not permit children to play on or around the stored machine.
3. Store the machine in a dry, level area.
4. Clean grease and oil as required and protect it from the elements.

1.5 MAINTENANCE SAFETY

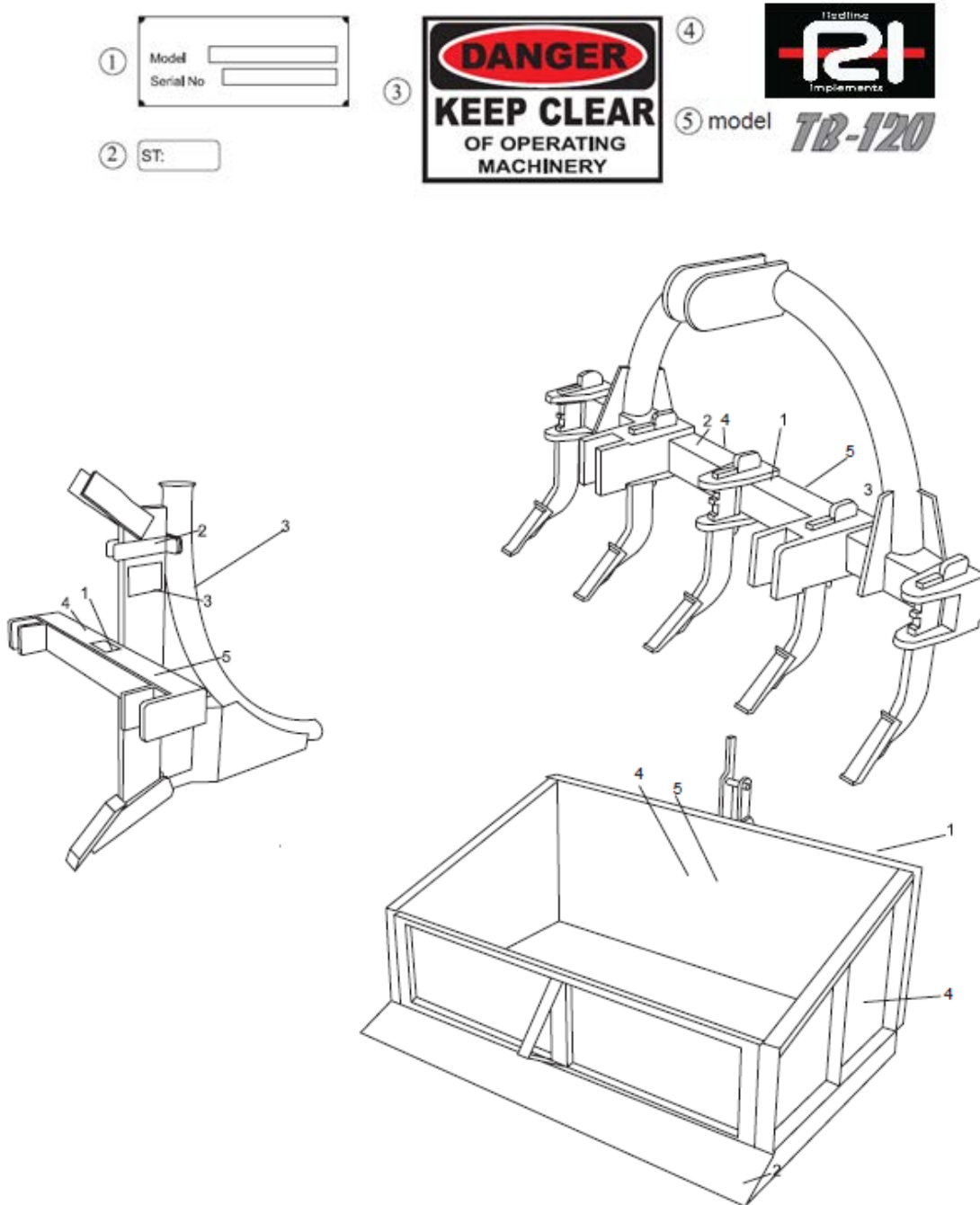
1. Good maintenance is your responsibility. Poor maintenance is an invitation to trouble.
2. Follow good shop practices.
3. Keep service area clean and dry.
4. Be sure electrical outlets and tools are properly grounded.
5. Use adequate light for the job at hand.
6. Make sure there is plenty of ventilation. Never operate the engine of the tractor in a closed building. The exhaust fumes may cause asphyxiation.
7. Before working on this machine, shut off the engine, set the brakes, and remove the ignition key.
8. Never work under equipment unless it is secured by a mechanical stand.
9. Use personal protection devices such as eye, hand and hearing protectors, when performing any service or maintenance work. Use heavy gloves when handling blades.
10. Only use genuine parts for service and maintenance.
11. A fire extinguisher and first aid kit should be kept readily accessible while performing maintenance on this equipment.

12. Periodically tighten all bolts, nuts and screws and check that all pins are properly installed to ensure unit is in a safe condition.
13. When completing a maintenance or service function, make sure all safety shields and devices are installed before placing machine in service.

SAFETY INSTRUCTIONS

1.6 SAFETY DECAL

The position of safety decals are shown in the illustrations below. Good safety requires that you familiarize yourself with the various safety signs, and increase your **SAFETY AWARENESS**.



OPERATION

2.1 INTALLATION

All these implements are designed to attach to the 3 point hitch of small agricultural tractors.

For carry all and Transport box

- Position implement on the ground.
- Back the tractor into position and lower the linkage. Line up the lower linkage arms with the linkage pins of the implement.
- Slide the linkage arm onto the pins and secure with lynch pins.
- Attach the top link to the ripper.
- Adjust the solid top link to obtain the correct angle of the implement.
- Pipe layer is clamped and bolted to the single tyne ripper.

2.2 OPERATION

RIPPER

Use low range gear and slowly lower rippers into the ground. Rippers must only be operated in a straight line. Depending on the soil type will determine the horsepower required and the number of passes required to rip and the depth of the shank. Additional PL-100 pipe layer can be added to single tyne ripper for laying polyurethane pipes.

Pipe layer

Use single tyne ripper without loading the pipe to ensure these is not hidden obstacles in the soil eg; roots rocks or foreign objects. Roll out the poly pipe beside the ripped line, position tractor & ripper/ pipe layer at the start, feed poly pipe over side of tractor all the way through the pipe layer. Tie the start end of pipe to a fixed point. Lower ripper to the required depth and manually fees the poly pipe as tractor moves slowly-forward.

Carryall

Use the three point linkage position control to adjust the carry all floor height for loading, carrying and unloading. Secure loads with suitable tie downs as required

Transporter

Same as carryall, rear tail gate can be removed for loading loose material by backing into it with tractor. Use quick release tipping lever for dumping the load. The rear tail gate can be hinged to control the release of the material. To reset the quick release tipping lever lower the transporter to the ground.



Do not turn with the ripper in the ground. Damage to ripper will occur.
Always raise implement and lower after turn has been made

OPERATION

2.3 STOPPING

- Lower the implement (for ripper raises it from the trench first).
- Stop the tractor engine and apply the parking brake.
- Ensure that the implement is either on the ground or well supported when not in use.

MAINTENANCE

3.1 MAINTENANCE

Always follow the safety steps described in this manual, when doing any type of maintenance on this implement; service should be carried out by qualified personnel. Use authorized genuine parts only for replacement. The implement must be properly supported under its body on all 3 point linkage machines.

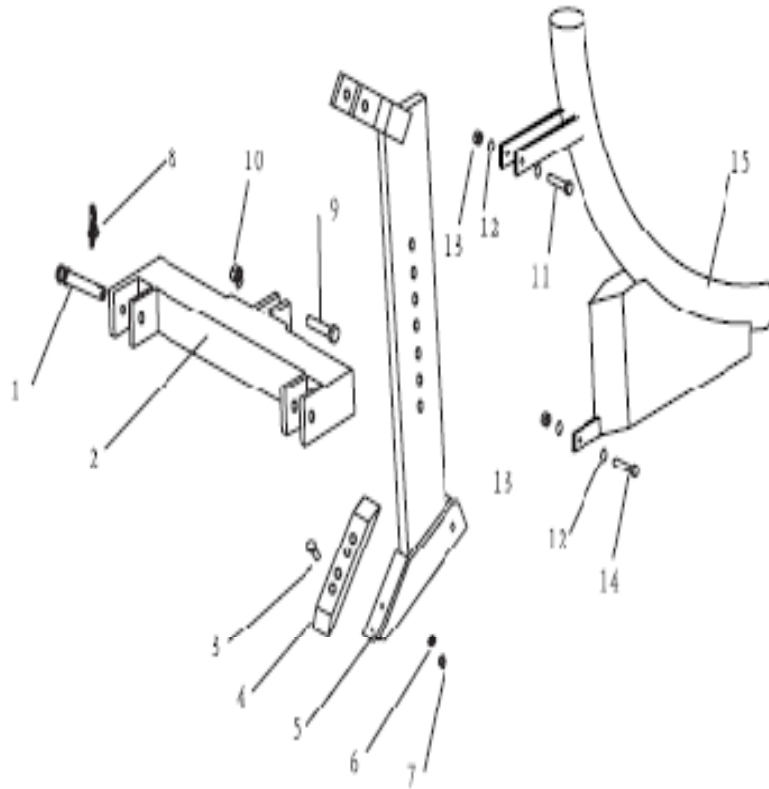
3.2 AFTER EACH USE

- Remove large debris such as clumps of dirt, grass, etc. from implement.
- Inspect machine and replace worn or damaged parts.
- Replace any safety decals that are missing or not readable.
- Periodically tighten all bolts nuts and screw and check that all R-clips and lynch pins are properly installed to ensure implement is in safe working order.
- Use safety stands if implement is required to be raised during maintenance.

3.3 BEFORE EXTENDED STORAGE

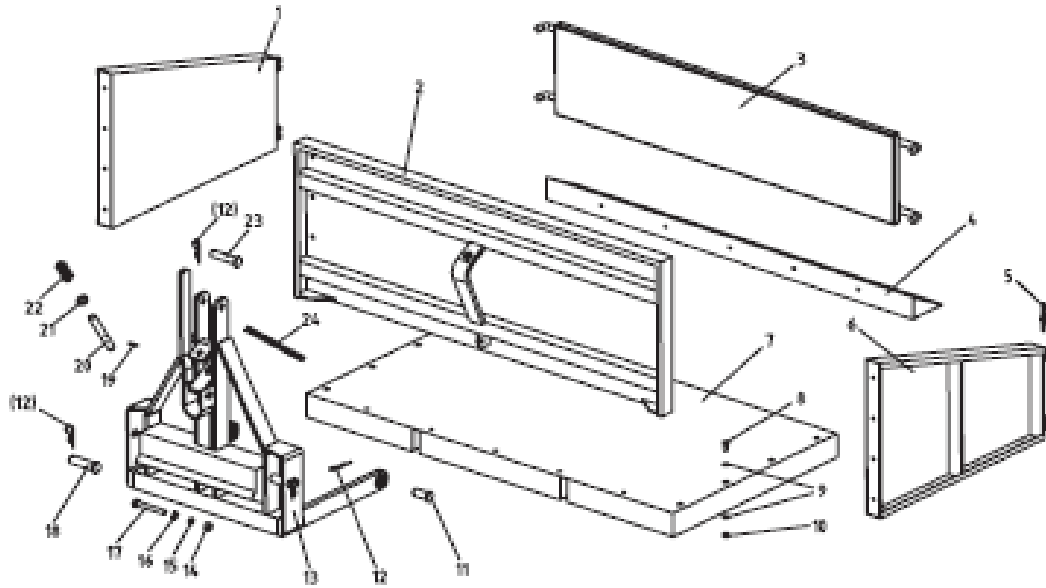
- Follow cleaning procedures from previous page.
- Wash implement using low-pressure water spray.
- Be careful when spraying near scratched or torn safety decals or near edges of decals as water spray can peel decals off surface. Spraying near chipped or scratched paint can also cause paint to peel more.
- Inspect machine for worn or damaged parts, replace any missing safety stickers.
- Sand down scratches and edges where paint is missing and repaint to prevent rust.
- Store the unit in a shed or under tarpaulin to protect from the weather. The blade or shank should be resting on boards or some other objects, keep out of soil when storing.
- Store in clean, dry place away from human activity or livestock.

PARTS LIST. SINGLE TYNE RIPPER & PIPELAYER



Ser No.	Part No.	Name & Specifications	Quantity
1	RB-00.102	Pin shaft	2
2	STR-L.00.012	Hug shelf	1
3	GB/T10-1988	Bolt M12 x 45	2
4	STR-L00.101	Blade	1
5	STR-L.00.011	Blade supporting	1
6	GB93-87	Spring lock washer 12	2
7	GB66170-86	Hex. Nut M12	2
8	200.56.011	Lock pin	2
9	GB5783-86	Bolt M12 x 45	2
10	GB889-86	Nut M12	2
11	GB5782-86	Bolt M12 x 90	1
12	GB97.1-85	Washer 12	4
13	GB889-86	Nut M12	2
14	GB5782-86	Bolt M12 x 70	1
15	PL100.00.001	Pipe layer	1

PARTS LIST. TRANSPORT BOX



Ser No.	Part No.	Name & Specifications	Quantity	Remark
1	TB110.00.012	Sideboard 'R'	1	
2	TB120.00.014	Front board	1	TB120
	TB150.00.014	Front board	1	TB150
3	TB120.00.011	Tailgate	1	TB120
	TB150.00.011	Tailgate	1	TB150
4	TB120.00.016	Slope	1	TB110
	TB150.00.016	Slope	1	TB120
5	200.56.011	Lock pin	2	
6	TB110.00.013	Sideboard 'R'	1	
7	TB120.00.017	Bottom board	1	TB110
	TB150.00.017	Bottom board	1	TB120
8	GB5783-86	Bolt M8 x 20	26	
9	GB96-85	Washer 8	52	
10	GB889-86	Locking nut M8	26	
11	TB110.00.101	Pin	2	
12		R pin	5	
13	TB110.00.015	Lifting bracket	1	
14	GB170-86	Nut M12	1	
15	GB93-87	Spring washer 12	1	
16	GB97.1-85	Plain washer 12	1	
17	GB5782-86	Bolt M12 x 90	1	

Ser No.	Part No.	Name & Specifications	Quantity	Remark
18	TB110.00.104	Pin shaft	2	
19	GB879-86	Electric cylinder pin	1	
20	TB110.00.102	Pin shaft	1	
21	GB97.1-85	Plain washer 18	1	
22	TB110.00.103	Spring	1	
23	TB110.00.105	Pin shaft	1	
24	TB110.00.018	Chain	1	